



## FOR THE SPECIAL NEEDS OF SENSITIVE SKIN

### Seraman™ sensitive foam

#### MODERN & SKIN-FRIENDLY HAND & BODY CLEANSING WASH

Optimal hand and body cleansing wash developed for sensitive skin.

- MODERN surfactant combination
- SKIN-FRIENDLY - Dye and fragrance-free



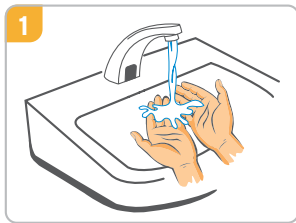
# Seraman™ sensitive foam

Modern and skin-friendly hand & body cleansing wash.

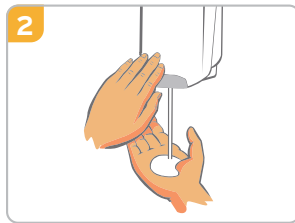
## PRODUCT CHARACTERISTICS

PRODUCT PERFORMANCE	BENEFITS FOR THE USER
Particularly skin-friendly surfactant combination containing APG (alkyl polyglucoside)	Suitable for individuals with sensitive skin
Dye and fragrance-free Use of an extremely skin-friendly preservative	Low allergenic potential, less skin irritation
APG is made from renewable raw materials such as maize, potatoes, wheat and natural fats including coconut and palm kernel oil	Extremely environmentally friendly since it is easily degradable and residue-free
Foam application Stable creamy foam - economical	Easy to rinse off Extremely gentle on the skin Product savings of up to 70% and reduced water consumption

## INSTRUCTIONS FOR USE



Wet hands with water.



Pump the product once or twice onto the palm of your hand.



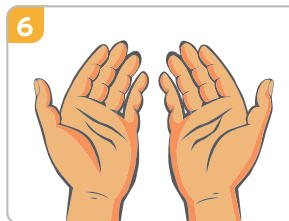
Rub your palms together to create a lather. Then wash your hands thoroughly.



Rinse your hands with water.



Thoroughly dry your hands with a disposable towel.



Your hands are now clean.

## ORDERING INFORMATION

PRODUCT	PACKAGING UNIT	ORDER CODE	NHS SC CODE
Seraman™ sensitive foam (Nexa)	6 x 750ml	3083200	MRB1021
Nexa Manual Dispenser	1 x 6	1003446	MRB1047
Nexa Touch Free Dispenser	1 x 6	10034392	MRB1048
Nexa Protective Shield	Each	10032305	MRB1049
Nexa Lock and Key Kit	10 locks and 2 keys	10032375	MRB1050

### ECOLAB EUROPE

Richtistrasse 7  
8304 Wallisellen  
Switzerland

Distributed by:

### ECOLAB HEALTHCARE

Winnington Avenue,  
Northwich,  
Cheshire CW8 4DX  
United Kingdom

## AREAS OF APPLICATION

- For washing hands, body and hair
- Suitable for use in the catering and food-processing industries
- For individuals with sensitive skin such as, for example, children, the elderly and nursing staff

## EXPERT REPORT

We will be happy to send you our latest expert report upon request.

## INGREDIENTS

### Composition Seraman™ sensitive foam:

Aqua, Sodium Laureth Sulfate, PEG-7-Glyceryl Cocoa- te, Lauryl Glucoside, Laureth-2, Sodium Benzoate.

## RECOMMENDED APPLICATION

When should I wash my hands?

- When they are visibly soiled with blood or other body fluids
- After suspected contact with potentially spore-foaming pathogens, including Clostridium difficile
- After using the toilet



ALWAYS READ THE LABEL AND PRODUCT INFORMATION BEFORE USE.